



## 46 Gloucester Avenue West Pymble NSW

5 3 1

Enjoying a prime high side position at the end of a quiet cul-de-sac, this family home provides an idyllic lifestyle for those who love entertaining. Placed to enjoy bush vistas and easy access to the Great North Walk, it's perfect for lovers of the great outdoors. The layout includes a formal living room which flows through bifold doors to the covered entertaining terrace plus a casual family room which opens to a vast rear deck complete with built in spa. Downstairs offers the bonus of separate, fully self-contained accommodation perfect for extended families or guests. Nestled in a whisper quiet location, the home is close to West Pymble Public School and buses to rail.

- Four bedrooms all with built-ins, luxury ensuite to master
- Formal lounge with combustion fireplace flows to covered terrace
- Open plan skylit kitchen with gas cooking and generous

**Price** : \$ 2,098,888  
**Land Size** : 968 sqm  
**View** : <https://www.lorimerestateagents.com.au/sale/nsw/north-shore-upper/west-pymble/residential/house/7715253>

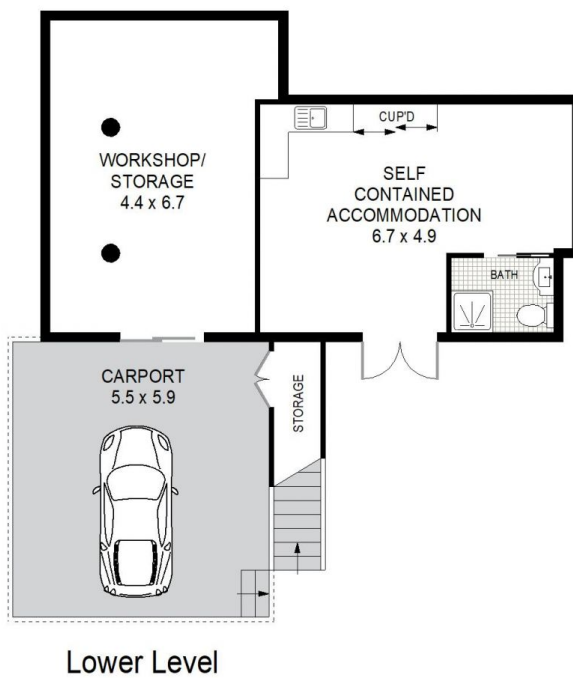


**Matthew Lorimer**  
0400 844 411



**Lee Duffy**  
0400 844 411





INTERNAL AREA APPROX : 219m<sup>2</sup>

## 46 Gloucester Avenue, West Pymble

Measurements are approximate, Floor plan is indicative only, Floor plan for marketing purposes only