



11 Wallalong Crescent West Pymble NSW

3 1 1

Set on an easy care north to rear block, this family home has been enhanced by a contemporary renovation and is ready to move in and enjoy. The functional floorplan reveals an open plan living area with polished timber floors which flows to the kitchen and alfresco entertaining terrace.

The lower level features a rumpus/media room which opens to a covered terrace and the established back garden. Set in a convenient location, the home is close to buses to rail and Macquarie and is a walk to village shops and local schools.

- Open plan lounge and dining with polished timber floors flows to terrace
- Renovated gas kitchen features European stainless steel appliances
- Three generous bedrooms all with built in robes and leafy

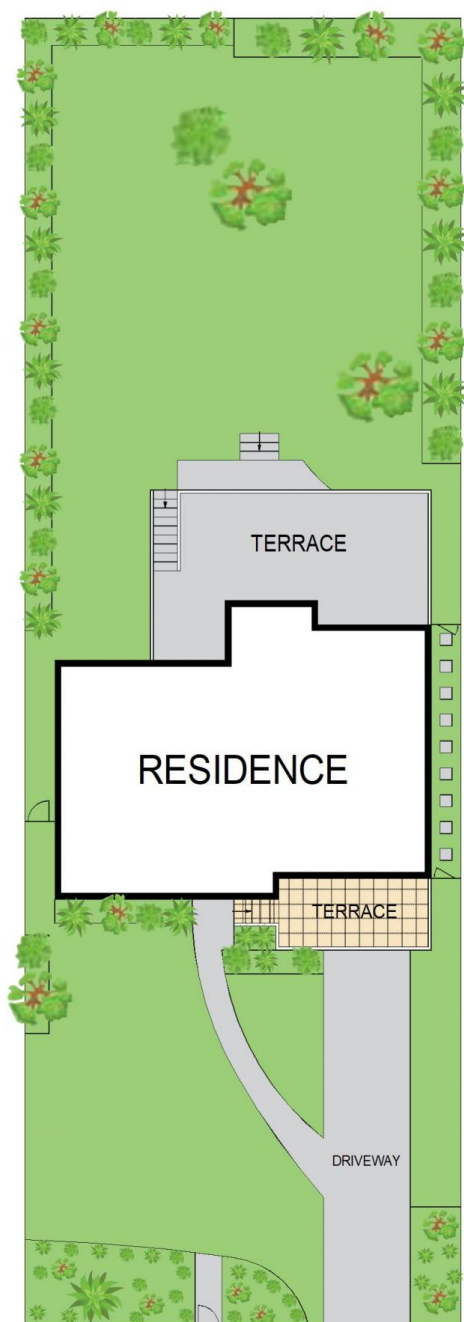
Price : \$ 2,250,000
Land Size : 696 sqm
View : <https://www.lorimerestateagents.com.au/sale/nsw/north-shore-upper/west-pymble/residential/house/7364553>



Matthew Lorimer
0400 844 411

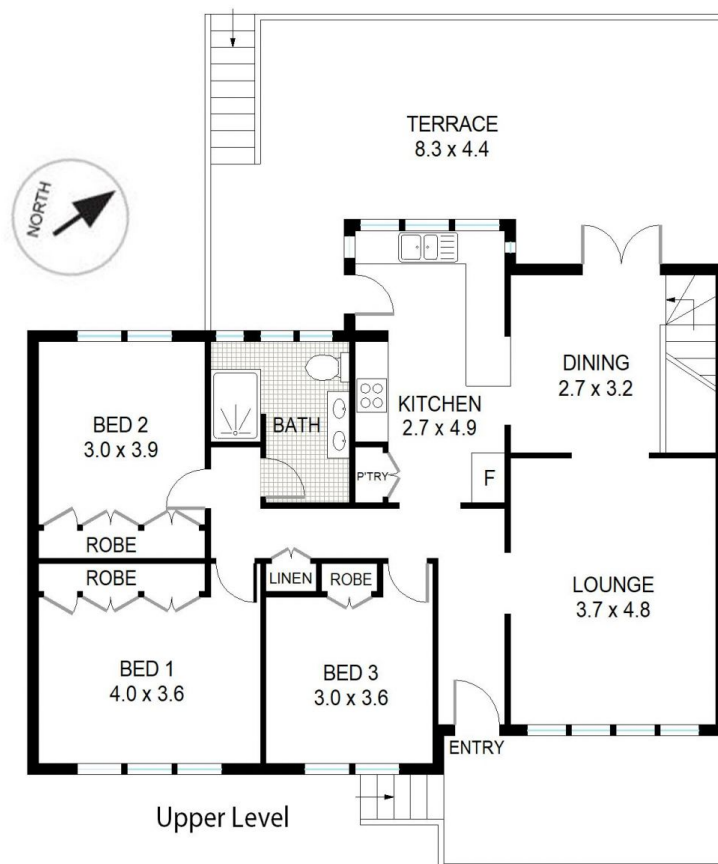


Lee Duffy
0400 844 411

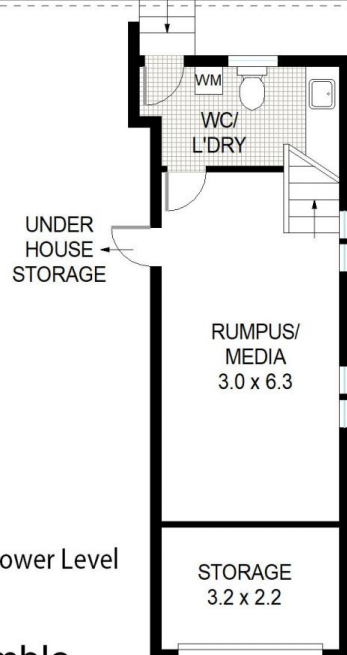
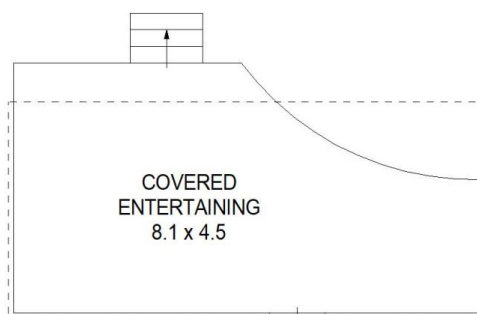


Site Plan

INTERNAL AREA APPROX : 133m²



Upper Level



Lower Level

11 Wallalong Crescent, West Pymble

Measurements are approximate, Floor plan is indicative only, Floor plan for marketing purposes only