



## 224 Ryde Road West Pymble NSW

3 1 3

Offered for the first time in 22 years, this solid full brick 1950's home provides a rare entry level opportunity into the West Pymble market. Comprising three bedrooms, loungeroom with open fireplace, separate dining room, bathroom with additional separate w/c and a kitchen which overlooks the back garden, the home is ready for a complete renovation. Sitting on 930sqm, it is close to buses to both Gordon Station and Macquarie business park and is in the coveted Gordon West Public School zone.

**Price** : \$ 1,300,000  
**Land Size** : 930 sqm  
**View** : <https://www.lorimerestateagents.com.au/sale/nsw/north-shore-upper/west-pymble/residential/house/7234894>

- PLEASE PARK IN WYUNA ROAD FOR THE OPEN HOUSE
- Solid full brick construction, concrete slab and piers
- Entry level opportunity to the West Pymble market
- Three bedrooms, master with built in wardrobe
- Kitchen with gas cooking overlooks the rear garden
- Tiled floors, timber venetians, open fireplace



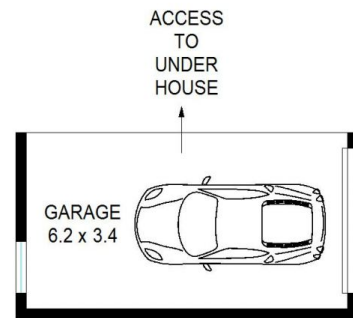
**Matthew Lorimer**  
0400 844 411



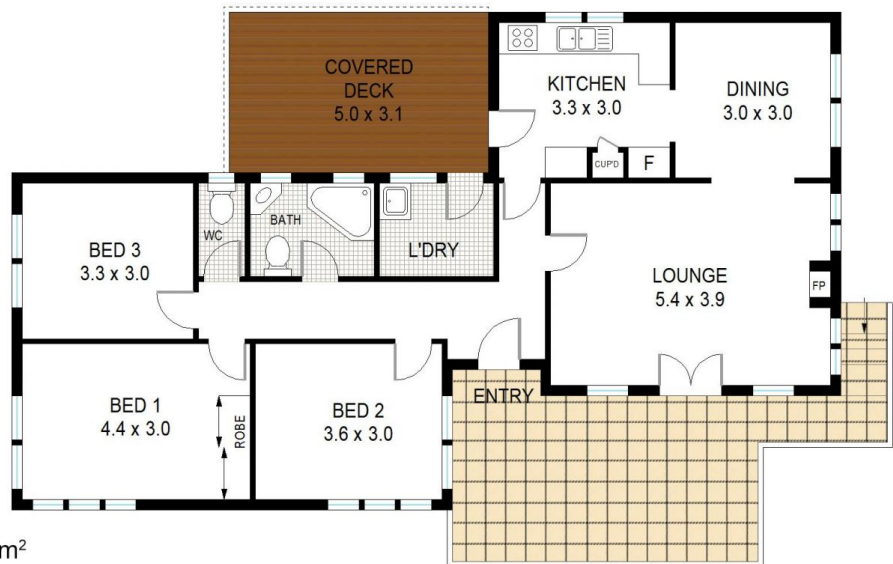
**Lee Duffy**  
0400 844 411



Site Plan



Lower Ground Floor



INTERNAL AREA APPROX : 97m<sup>2</sup>

Ground Floor

## 224 Ryde Road, West Pymble

Measurements are approximate, Floor plan is indicative only, Floor plan for marketing purposes only