



29 Inverallan Avenue West Pymble NSW

5 3 2

Positioned in one of West Pymble's most sought after pockets, this beautifully appointed architect designed home provides the ultimate in family living. Showcasing quality finishes and an abundance of natural light, the thoughtfully renovated interiors and flowing floorplan are perfect for indoor/outdoor entertaining. The entertainer's terrace, tiled swimming pool and established, easy care gardens with level lawns all enjoy an ideal northerly aspect. Conveniently located, it's close to village shops, Bicentennial Park, a variety of schools and buses to Gordon station.

- Five oversized bedrooms all with built-ins, ensuite to master
- Formal lounge with slow combustion fireplace overlooks courtyard
- Open plan dining and family living flow to entertaining

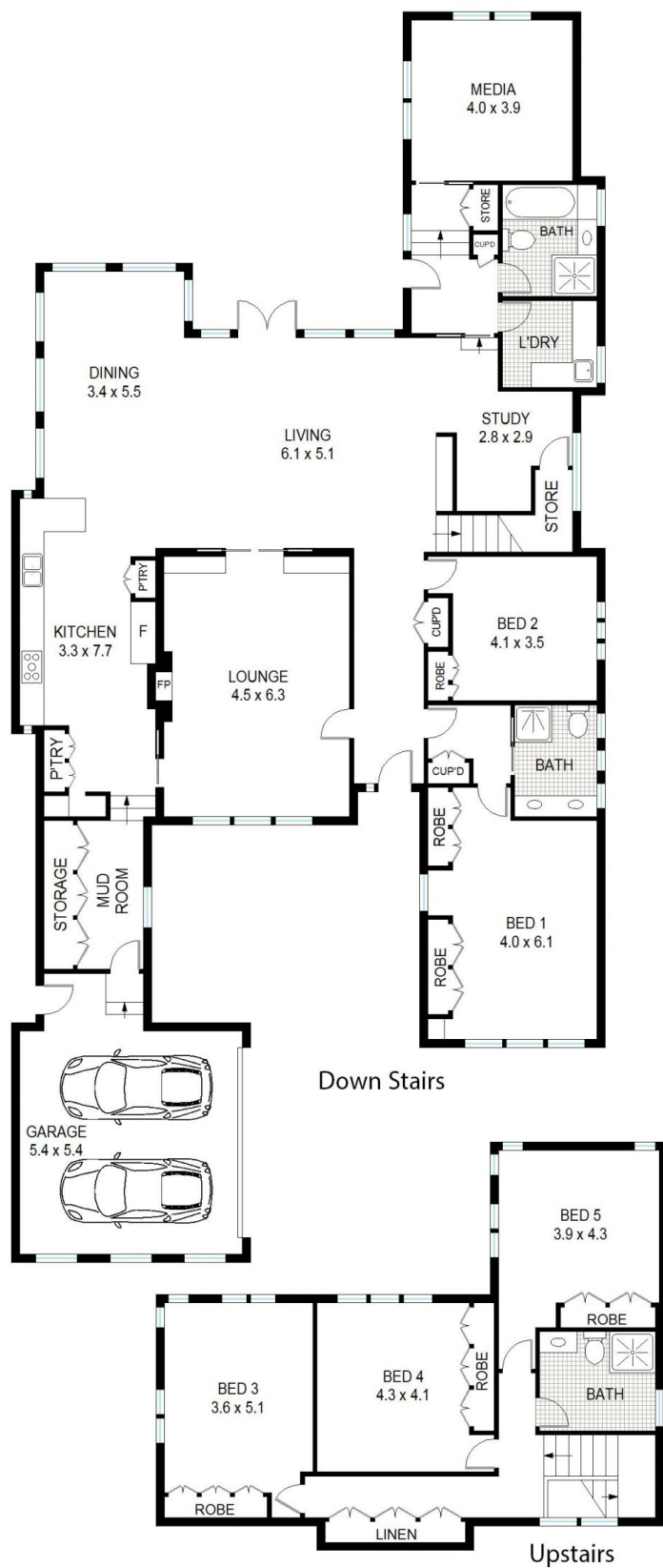
Price : \$ 4,175,000
Land Size : 847 sqm
View : <https://www.lorimerestateagents.com.au/sale/nsw/north-shore-upper/west-pymble/residential/house/7152709>



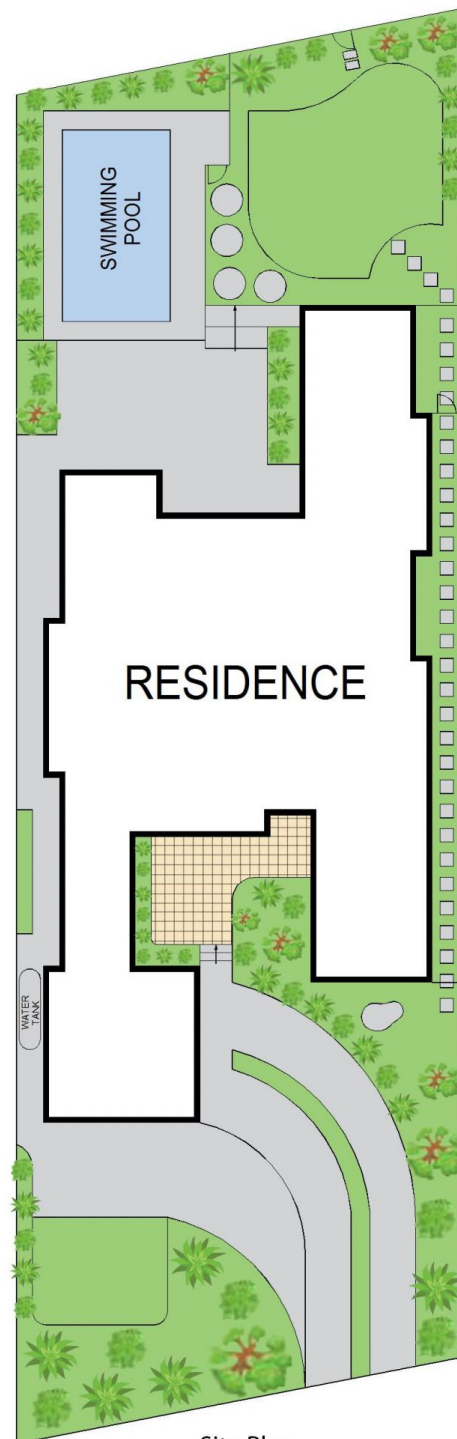
Matthew Lorimer
0400 844 411



Lee Duffy
0400 844 411



INTERNAL AREA APPROX : 334m²



Site Plan



29 Inverallan Avenue, West Pymble

Measurements are approximate, Floor plan is indicative only, Floor plan for marketing purposes only