



42 Wyuna Road West Pymble NSW

4 🛏 2 🚿 2 🚗

This charming timber cottage is ready to live in now and presents an outstanding opportunity to renovate, extend or rebuild (STCA). The current floorplan includes four bedrooms plus a study, formal lounge/dining and a family room which opens to a covered timber deck with leafy vistas. This well located home rests on 1062sqm of land in a family friendly pocket of West Pymble within the sought after Gordon West Public School zone and is close to Bicentennial Park and buses to both Gordon station and Macquarie business park.

- Neat and functional kitchen with ample storage and gas cooking
- Lounge/dining and family rooms flow to covered deck
- Timber floors, high ceilings, air conditioning, picture windows
- Study, nursery or dressing room adjoins master bedroom

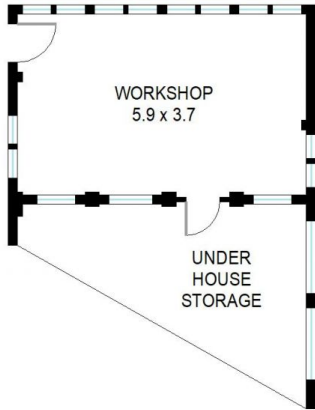
Price : \$ 2,030,000
Land Size : 1062 sqm
View : <https://www.lorimerestateagents.com.au/sale/nsw/north-shore-upper/west-pymble/residential/house/7107123>



Matthew Lorimer
0400 844 411



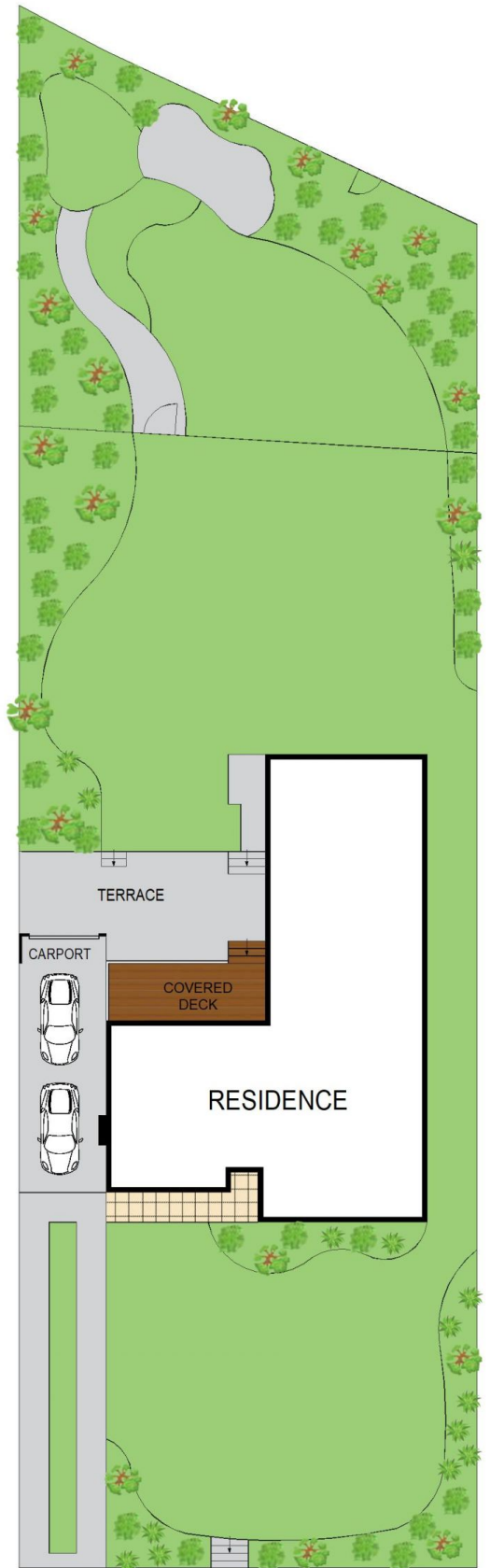
Lee Duffy
0400 844 411



Lower Ground Floor



Ground Floor



Site Plan

42 Wyuna Road, West Pymble

INTERNAL AREA APPROX : 192m²

Measurements are approximate, Floor plan is indicative only, Floor plan for marketing purposes only