



## 200 Federal Drive Federal NSW

7 4 4

Located in the heart of Byron Bay Hinterland, this incredible property offers a unique dual occupancy layout with two oversized homes on a sprawling five acre landholding. The separate resort style dwellings are designed side by side to bask in wonderful privacy, an idyllic outlook and a sun drenched north facing aspect. Both homes reveal modern interiors, vast open plan living zones and multiple outdoor entertaining areas. This lifestyle oasis is a short drive to popular Federal village which offers cafes, a well stocked general store, pre-school and school buses. The property is an easy 15km drive to Bangalow, 19km to Mullumbimby and 25km to Byron Bay.

- Spacious original home features four bedrooms plus study and 2.5 bathrooms, 2 verandahs
- Modern kitchen equipped with gas cooktop opens to outdoor living area

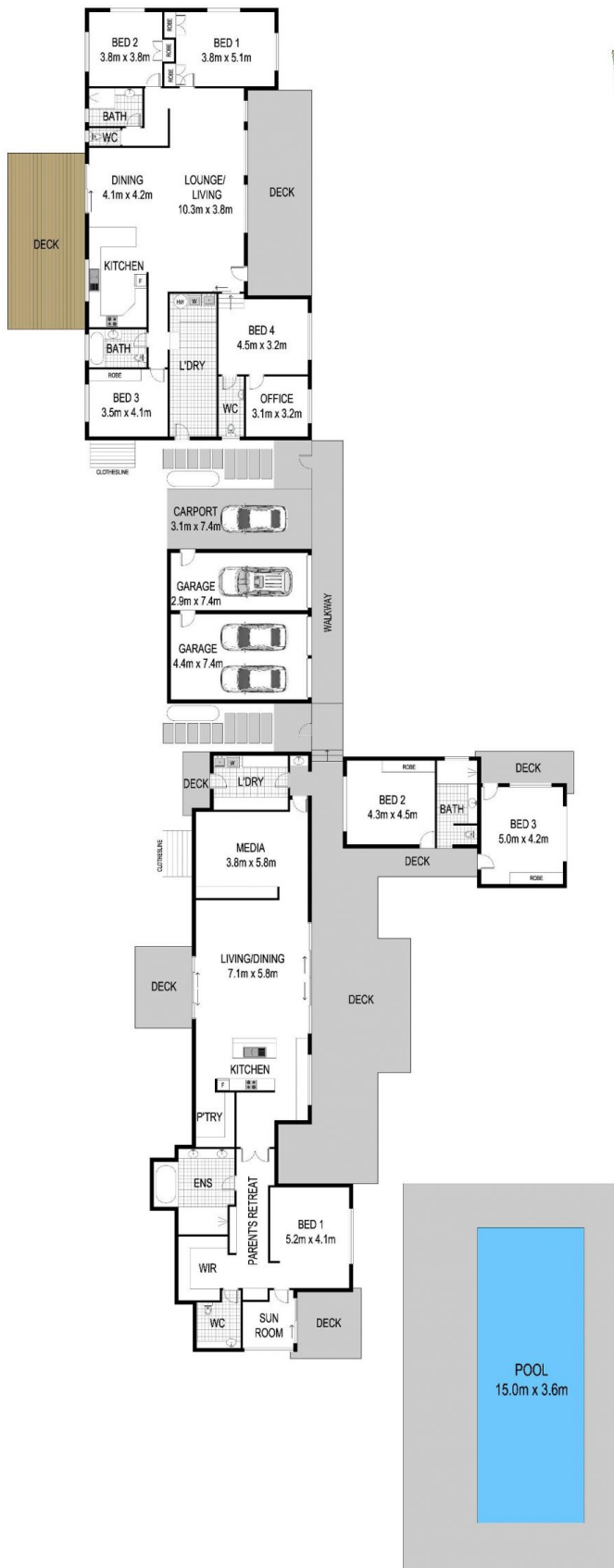
**Land Size** : 2 ha  
**View** : <https://www.lorimerestateagents.com.au/sale/nsw/northern-rivers/federal/residential/house/6536140>



**Duncan Lorimer**  
0400 844 411



**Matthew Lorimer**  
0400 844 411



**SITE PLAN**

INTERNAL : 533 SQ.M.  
EXTERNAL: 233 SQ.M.

## 200 Federal Drive, Federal

Measurements are approximate. Floor plan is indicative only. Floor plan for marketing purposes only.