



## 5 Kingsclare Street Leumeah NSW

5 1 4

On offer is this exceptional opportunity for buyers or investors to secure a large dual-level property and capitalise on its many possibilities. Located in a quiet part of Leumeah on a super large 733sqm landholding, this freestanding home presents a unique prospect with a big future. It was previously used as a commercial childcare facility with great income earning potential but could possibly be updated, reconfigured or converted back into a superb family home.

- Presented in good solid condition with many flexible layout options
- Featuring up to five bedrooms plus extra studies and sunrooms
- An expansive level yard and paved outdoor entertainment spaces
- Potential kitchen and family room at the rear and an

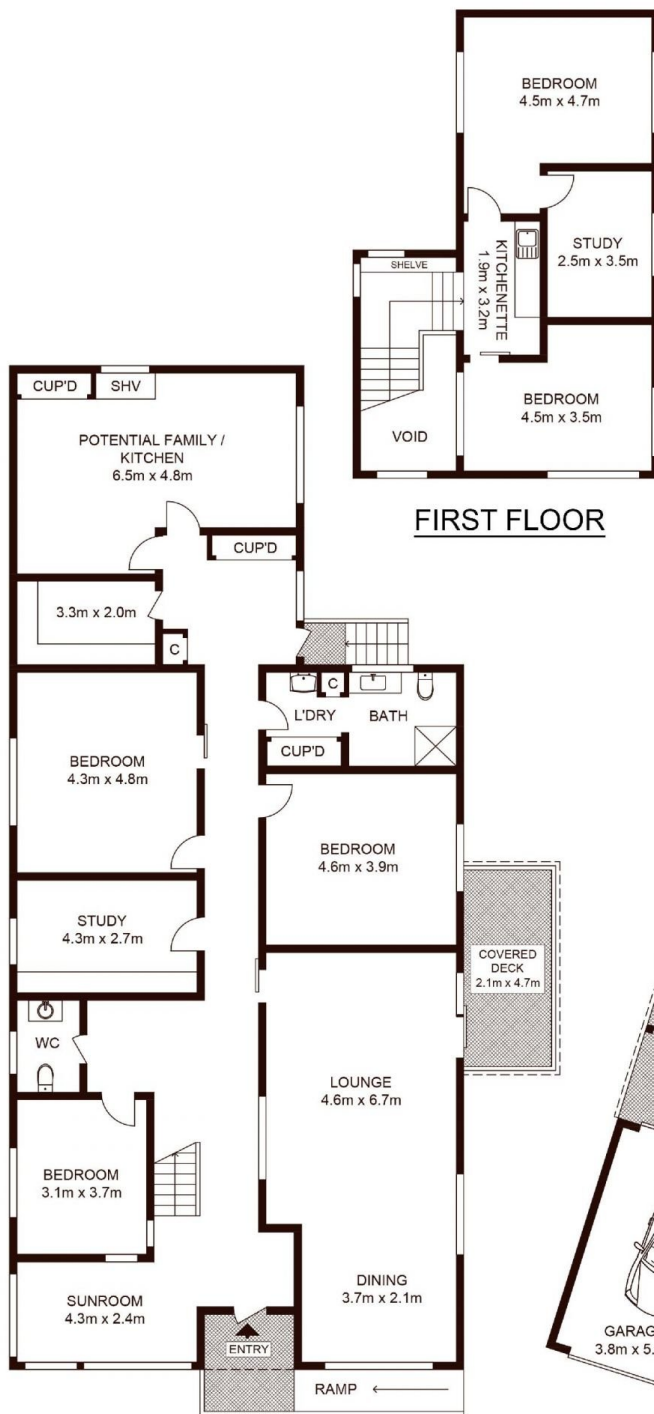
**Price** : \$ 710,000  
**Land Size** : 733 sqm  
**View** : <https://www.lorimerestateagents.com.au/sale/nsw/macarthurcamden/leumeah/residential/house/5784081>



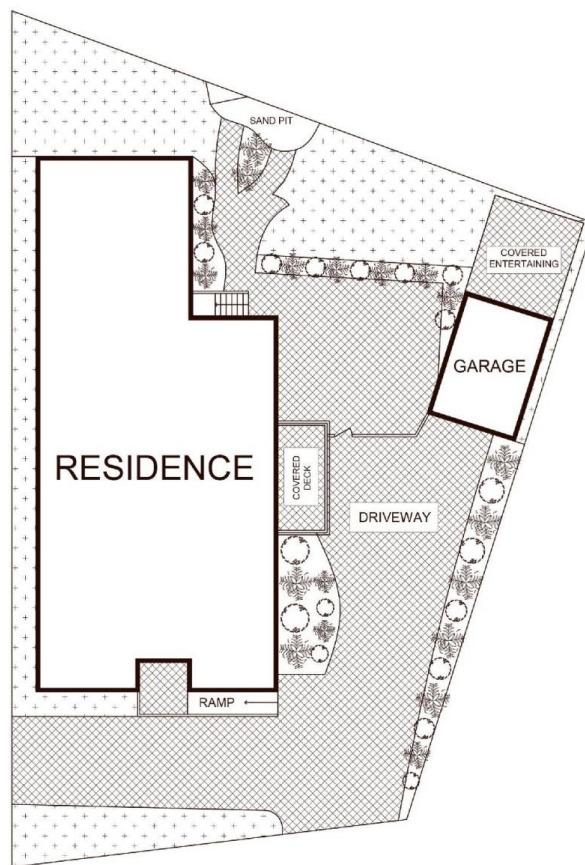
**Matthew Lorimer**  
0400 844 411



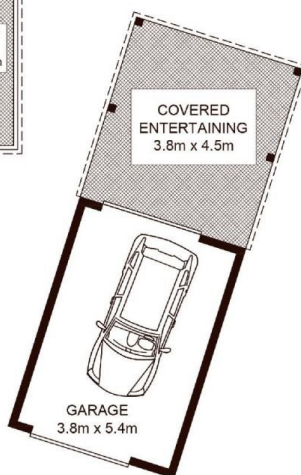
**Lee Duffy**  
0400 844 411



**FIRST FLOOR**



**SITE PLAN**



**GROUND FLOOR**

5 Kingsclare Street, LEUMEAH

Not to scale • All measurements are approximate • Drawn for marketing purposes only • Floorplan by © Xorix Media

