



12 The Comenarra Parkway West Pymble NSW

4 2 2

True to its iconic Pettit & Sevitt split level design, this privately set home seamlessly integrates natural light, space and the beauty of the Australian landscape into a modernist family haven. The interiors provide a selection of versatile living domains which open onto a large deck and paved alfresco setting immersed in a bushland backdrop, while a fully tiled swimming pool basks in a north facing aspect. Close to West Pymble village shops and schools, this quiet home offers easy access to Macquarie business park and buses to rail.

- Hidden from the street front for a heightened sense of peace and privacy
- Expansive open living zone plus separate dining and casual family space
- Modern kitchen equipped with stainless gas cooktop and stone bench tops
- Top floor bedrooms feature built-ins, master has ensuite

Price : \$ 1,515,000
Land Size : 1170 sqm
View : <https://www.lorimerestateagents.com.au/sale/nsw/north-shore-upper/west-pymble/residential/house/5781738>

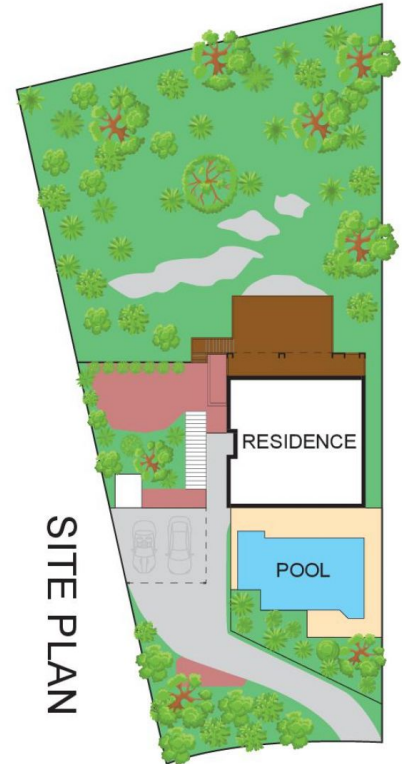
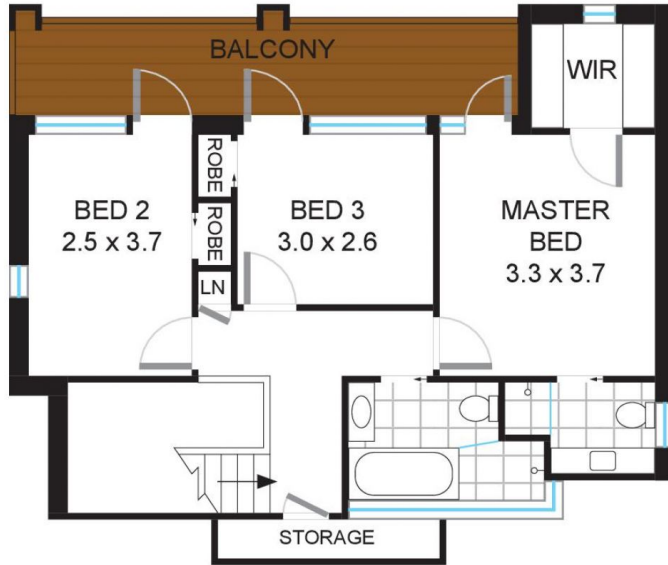


Matthew Lorimer
0400 844 411

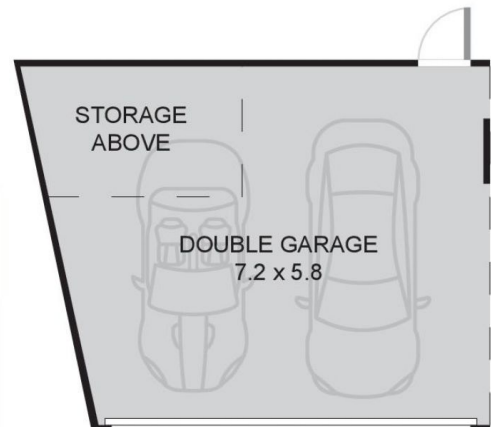
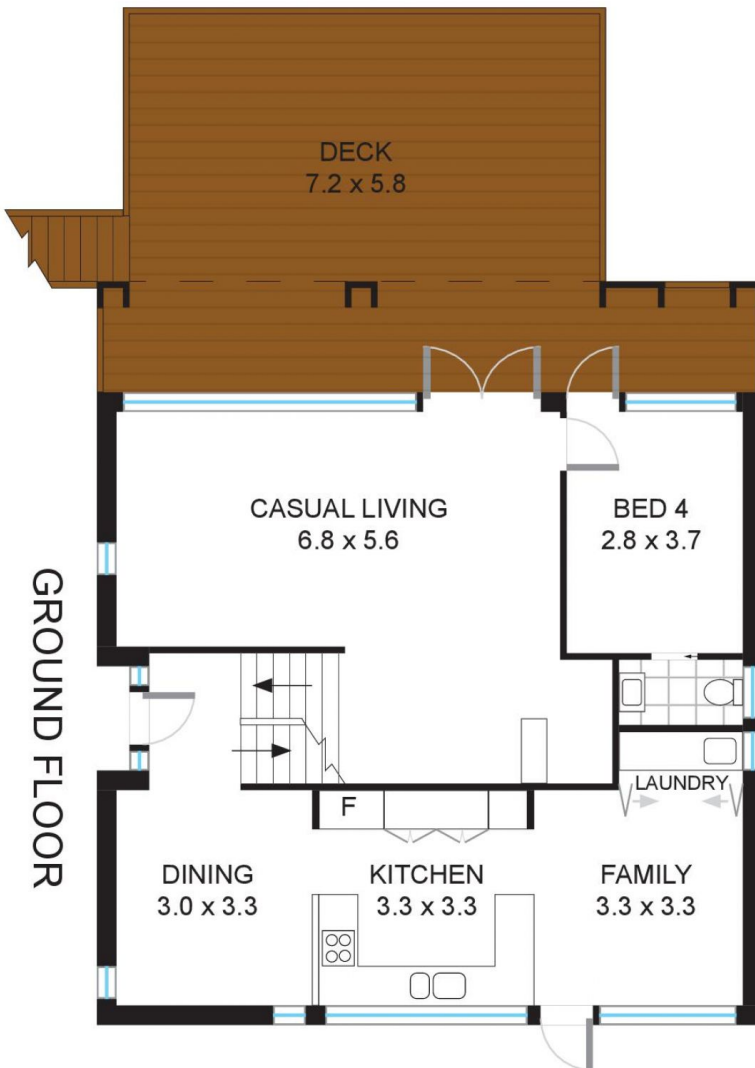


Lee Duffy
0400 844 411

FIRST FLOOR



GROUND FLOOR



INTERNAL APPROX: 134m²
 DECK + BALCONY
 APPROX: 57m²
 GARAGE APPROX: 36m²



12 The Comenarra Parkway, WEST PYMBLE

Measurements are approximate, Floor plan is indicative only, Floor plan for marketing purposes only