

LORIMER

ESTATE AGENTS



42/260 Penshurst Street Willoughby NSW

2  **2**  **1** 

Exuding a heightened sense of space, light and privacy, this sophisticated retreat offers a low maintenance lifestyle opportunity without compromising on luxury. The open living domain showcases high ceilings with full height glass opening for seamless indoor/outdoor flow onto a paved entertainers' terrace. Basking in elevated district views to the east, this apartment resides in the contemporary 'Willoughby Green' complex located just a stroll to a thriving urban hub of local shops, restaurants, city bus services and parks.

- Sleek light filled interiors awarded with quality oak floorboards
- Chic stone crafted kitchen equipped with stainless gas cooktop
- Private terrace plus residential garden and childrens' playground

Price : \$ 998,000

View : <https://www.lorimerestateagents.com.au/sale/nsw/north-shore-lower/willoughby/residential/apartment/5682080>

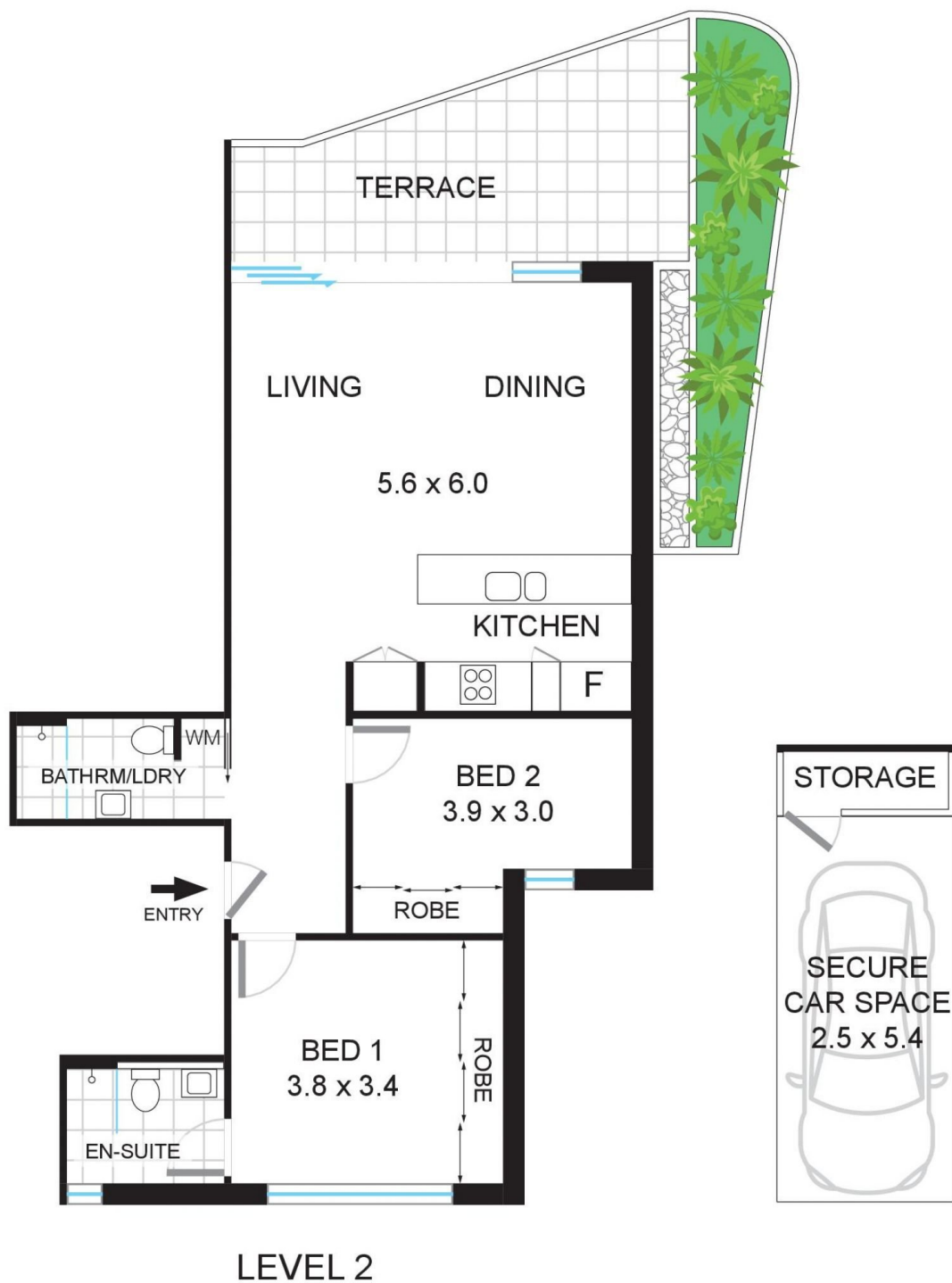


Matthew Lorimer
0400 844 411



Lee Duffy
0400 844 411

<https://www.lorimerestateagents.com.au>



INTERNAL (incl Terrace)
APPROX: 96m²
CAR SPACE + STORAGE
APPROX: 15m²

42/260 Penshurst St, WILLOUGHBY

Measurements are approximate, Floor plan is indicative only, Floor plan for marketing purposes only