



56 Wallalong Crescent West Pymble NSW

4 2 2

Revealing a versatile family-oriented layout, this bright northeast to rear home occupies a vast 930sqm parcel ideal for entertaining in a private, leafy setting. The functional single level layout centres around a gourmet kitchen which flows through bi-fold doors onto a timber deck and swimming pool for a relaxed indoor/outdoor lifestyle and maximum family enjoyment. Well located, this home is a stroll to West Pymble Public School, while offering easy access via local bus services to Gordon station, Macquarie business precinct, shopping centre and university.

- Interiors feature a spacious formal lounge, dining room and family room
- Granite and stainless kitchen equipped with five burner gas range
- Four bedrooms with built ins, study plus a teen

Price : \$ 1,755,000
Land Size : 930 sqm
View : <https://www.lorimerestateagents.com.au/sale/nsw/north-shore-upper/west-pymble/residential/house/5671600>

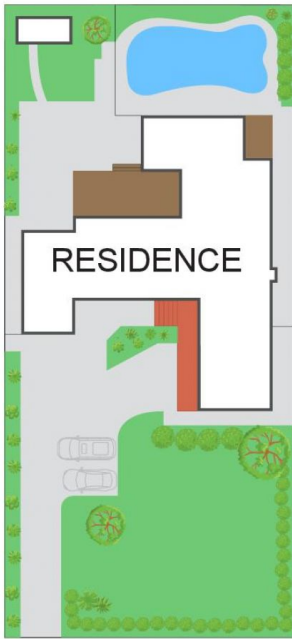


Matthew Lorimer
0400 844 411

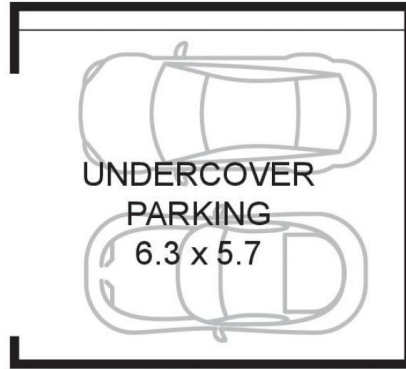


Lee Duffy
0400 844 411

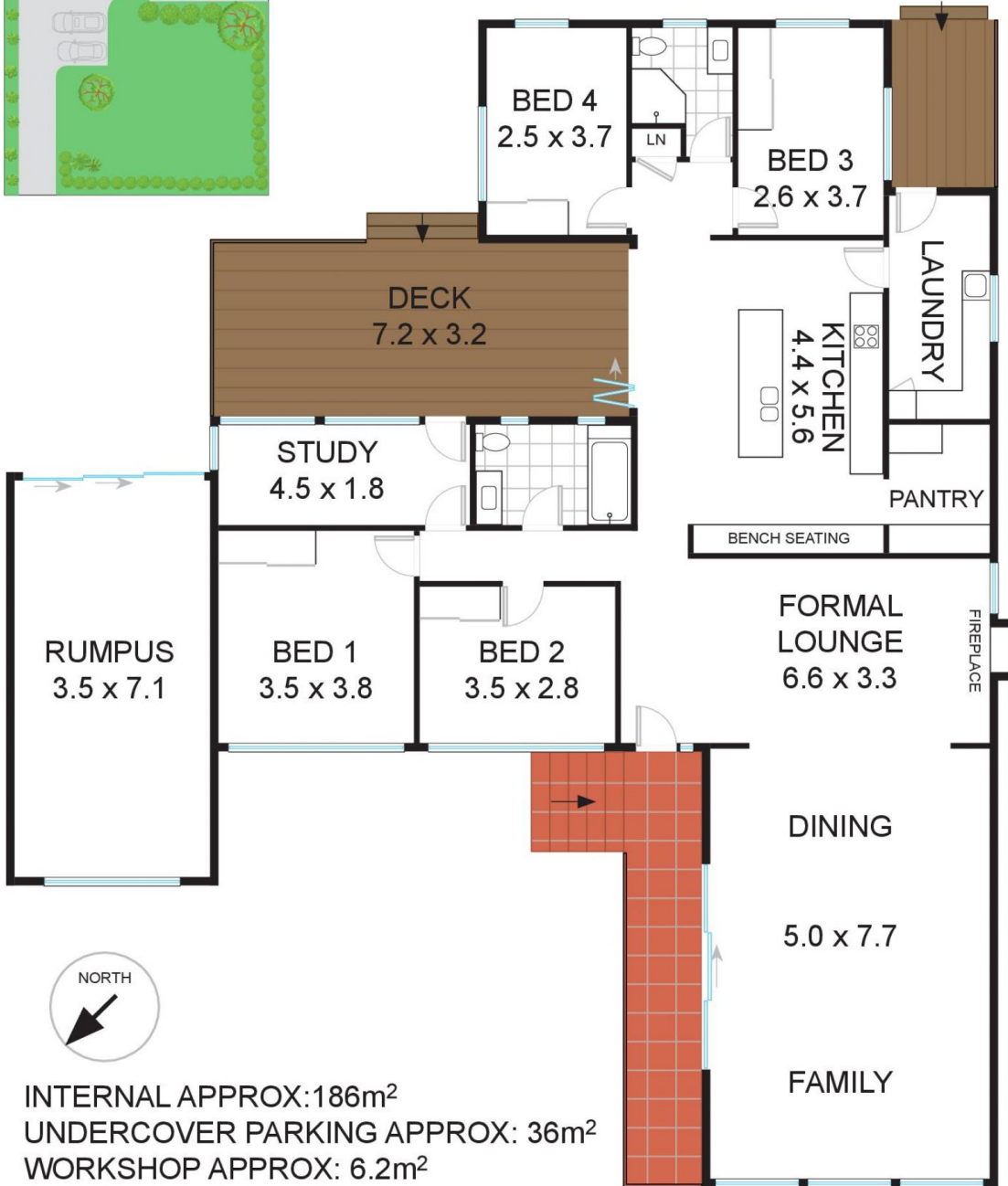
SITE PLAN



WORKSHOP
3.6 x 1.7



FLOOR PLAN



INTERNAL APPROX: 186m²
UNDERCOVER PARKING APPROX: 36m²
WORKSHOP APPROX: 6.2m²

56 Wallalong Crescent, WEST PYMBLE

Measurements are approximate, Floor plan is indicative only, Floor plan for marketing purposes only