

LORIMER

ESTATE AGENTS



2/73 Yarrara Road West Pymble NSW

3  2  2 

Modern, spacious and wonderfully private, this 245sqm north to rear townhouse resides in a quiet over 55s complex rarely seen in West Pymble. The master bedroom with ensuite enjoys a ground floor position and the light filled interiors provide multiple living areas which open onto a paved alfresco setting and easy-care lawn framed by a garden border. Furthermore, the modern CasearStone kitchen overlooks the courtyard and is open plan to the family room. This home is a level stroll to West Pymble shopping village and buses to Macquarie Centre and rail.

- Flowing open layout showcases a selection of quality finishes/fittings
- Generous formal lounge and dining room, open plan kitchen to family room
- Ground floor master complete with full ensuite and courtyard access
- Two guest bedrooms, one appointed with a large walk-in

Price : \$ 1,500,000

Land Size : 245 sqm

View : <https://www.lorimerestateagents.com.au/sale/nsw/north-shore-upper/west-pymble/residential/house/5671598>

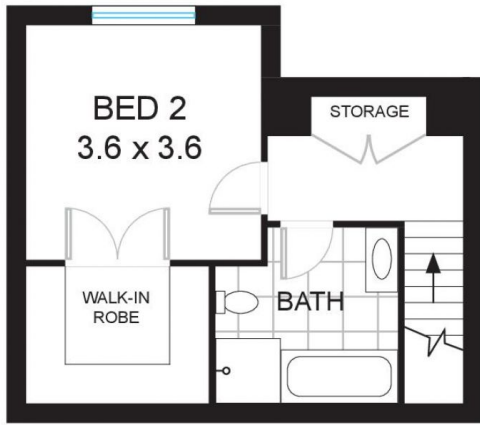


Matthew Lorimer
0400 844 411



Lee Duffy
0400 844 411

FIRST FLOOR



INTERNAL AREA
APPROX: 192m²

GROUND FLOOR



2/73 Yarrara Road, WEST PYMBLE

Measurements are approximate, Floorplan is indicative only, Floorplan for marketing purposes only