



12 Greenway Drive Pymble NSW

5 2 2

A welcoming double door entry reveals an enviable choice of flexible formal/casual living zones, including a large living room showcasing a timber cathedral ceiling and wood burning fireplace. Entertainers will delight in the expansive paved alfresco area, looking onto a child-friendly level lawn and stunning pool in the corner of the garden. A stone crafted kitchen provides quality appliances, while accommodation comprises four generous bedrooms with walk-in robes plus a versatile downstairs fifth/study. Adding further appeal is a palatial family bathroom, ducted air conditioning and a double garage with internal access. Bordering the pristine fairways of exclusive Avondale Golf Club, it's near transport, shops and schools.

Land Size : 1024 sqm

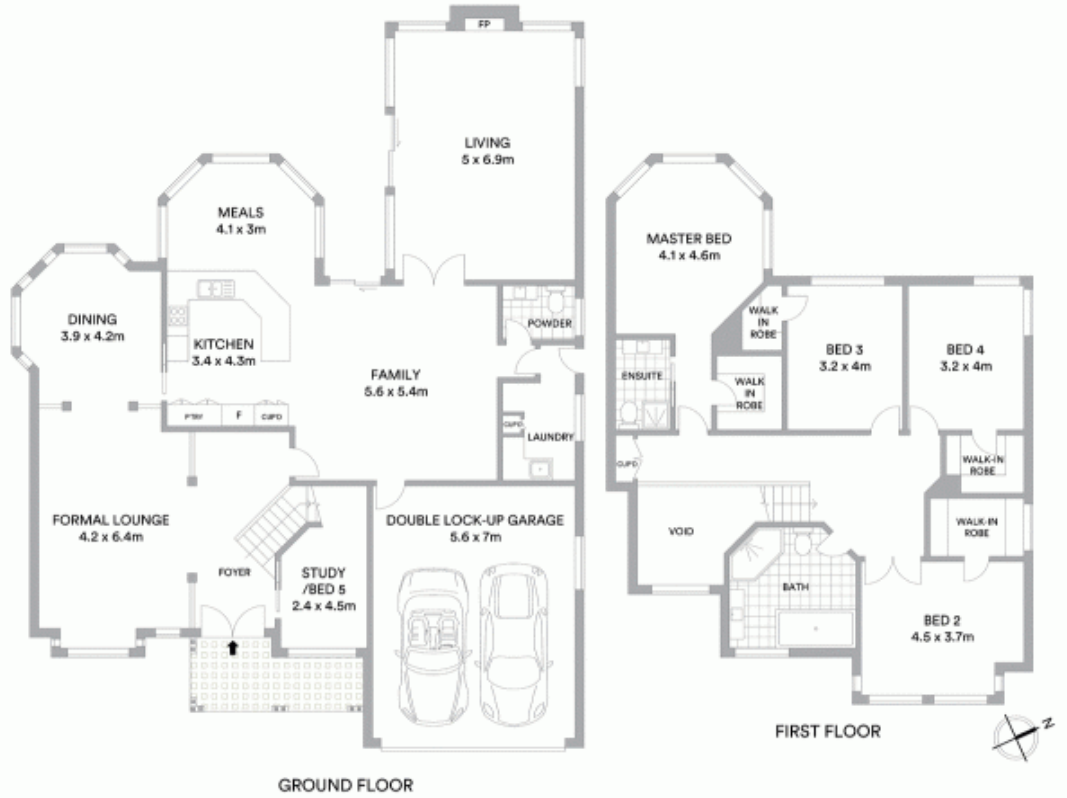
View : <https://www.lorimerestateagents.com.au/sale/nsw/north-shore-upper/pymble/residential/house/5671594>



Matthew Lorimer
0400 844 411



Lee Duffy
0400 844 411



McGrath

Scale in metres. Indicative only. All information contained herein is obtained from sources we believe to be accurate. We cannot guarantee its accuracy. Interested persons should make and rely on their own enquiries